




UNIVERSIDADE FEDERAL DO PARANÁ
COORDENAÇÃO DO CURSO DE MEDICINA VETERINÁRIA
DISCIPLINA DE PATOLOGIA VETERINÁRIA



Patologia do Sistema Tegumentar
2ª parte

Prof. Ass. Dr. Raimundo Alberto Tostes

Dermatoses Imuno-Mediadas

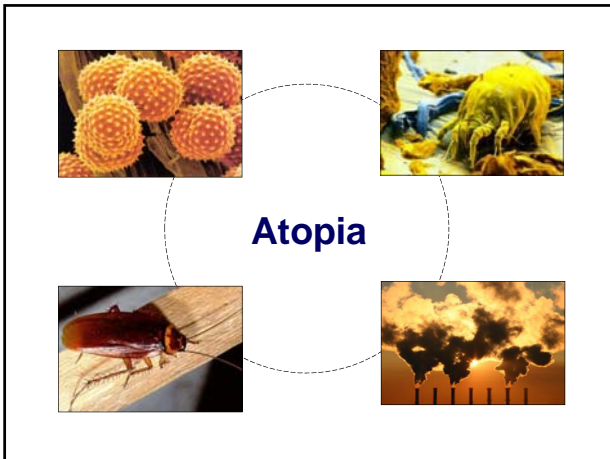
Dermatoses Alérgicas

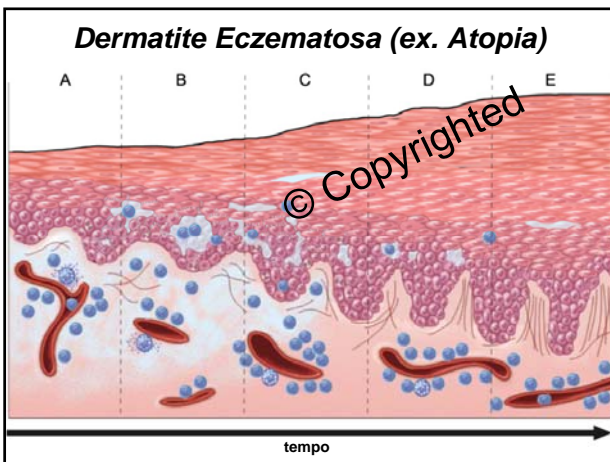
Atopia

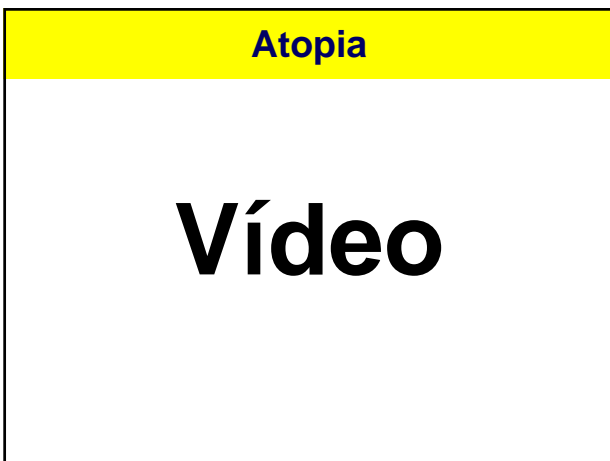
Hipersensibilidade Alimentar

Dermatoses Imuno-Mediadas

Atopia



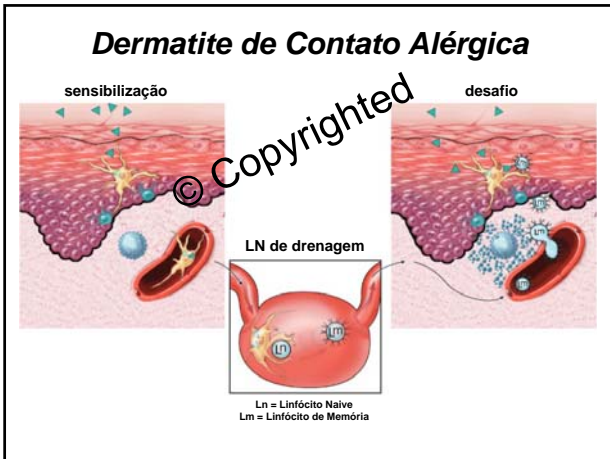












Dermatoses Imuno-Mediadas

Dermatite Alérgica à Saliva de Pulgas – DASP

Dermatite Alérgica à Saliva de Pulgas – DASP

- 1 Pulgas picam a pele para se alimentar
- 2 A saliva da pulgas provoca uma reação antigénica
- 3 O trauma auto-induzido provoca escoriação e inflamação
- 4 Instalação de infecção bacteriana

Dermatoses Auto-Imunes

Complexo Pênfigo

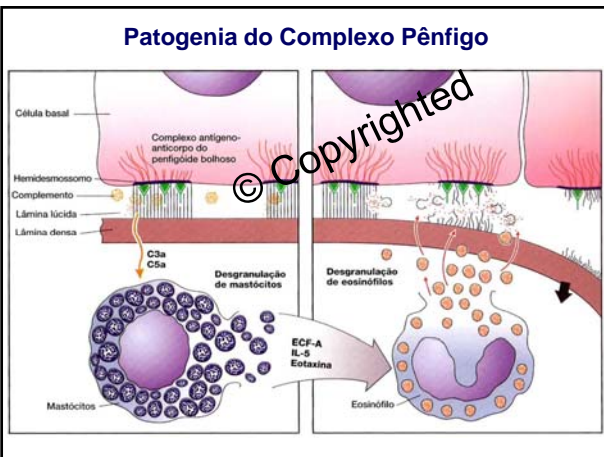
- Pênfigo Vulgar*
- Pênfigo Foliáceo*
- Pênfigo Vegetante*
- Pênfigo Eritematoso*
- Penfigóide Bolhoso*

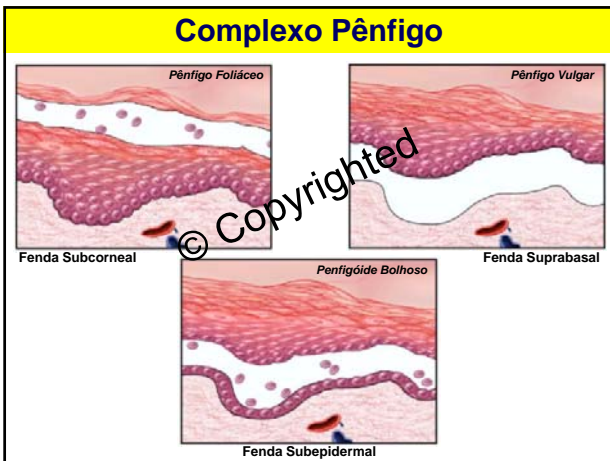
Lúpus Eritematoso

- L. E. Discóide*
- L. E. Sistêmico*

Complexo Pênfigo

Patogenia do Complexo Pênfigo

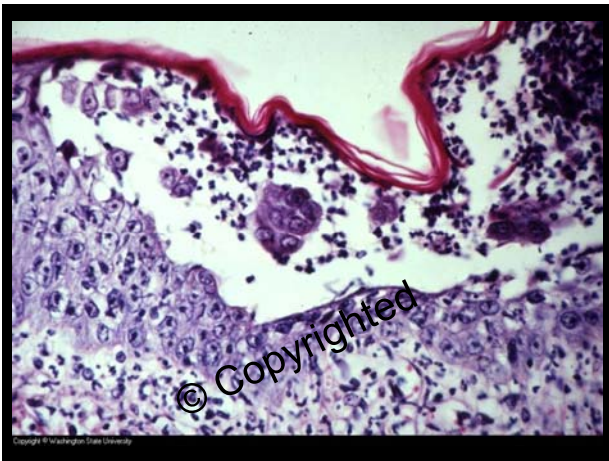




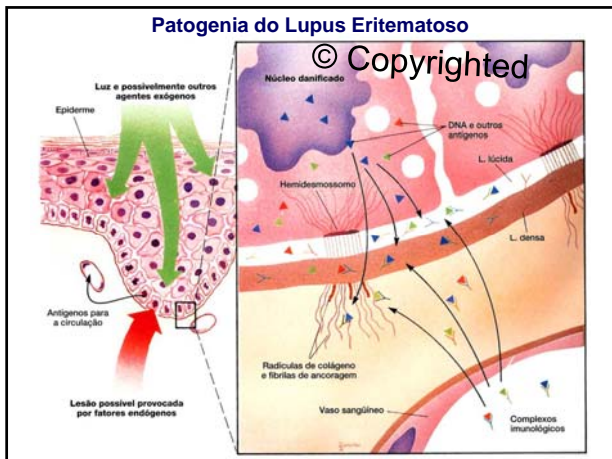








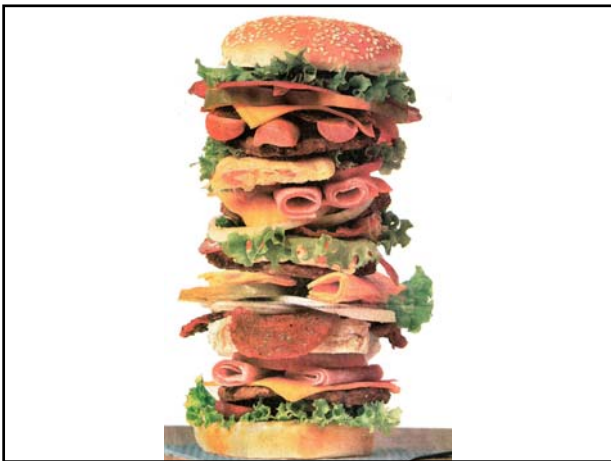
**Lupus
Eritematoso**











Dermatites Virais

Poxvírus
Ectima Contagioso
(Dermatite Pustular Contagiosa)

Herpesvírus
Mamilite Herpética Bovina

Outros vírus
Febre Aftosa (Aphovírus)

Dermatites Bacterianas

- Foliculite
 - Furunculose
- Piodermite
 - Superficial e Profunda
- Celulite



Foliculite

Associada a:

- Pioderma
- Demodex
- Dermatófitos

© Copyrighted


Foliculite

Alergias e endocrinopatias podem ser a causa de base de uma foliculite!



© Copyrighted

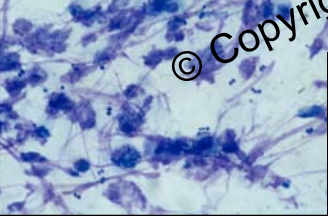
Foliculite




Raspado cutâneo

Citologia: cocos, leucócitos e...

Cultura fúngica






Piodermite Recurrente

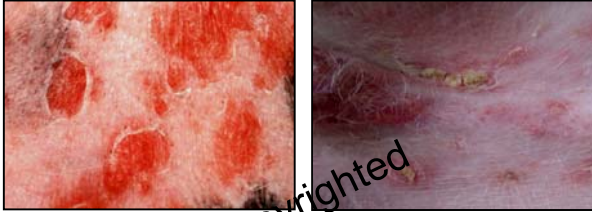
- Staphylococcus schleiferi* pode estar associado a piodermite em cães
- S. schleiferi* é isolado mais frequentemente de cães com piodermite recorrente quando em antibioticoterapia
- 10/14 *S. schleiferi* isolados eram resistentes a múltiplos antibióticos (RM)

<i>S. intermedius</i>	cefalexina →	<i>S. schleiferi</i> (RM)
<i>S. intermedius</i>	Baytril →	<i>S. schleiferi</i> (RM)
<i>S. schleiferi</i> (RM)	clindamicina →	<i>S. intermedius</i>

Piodermite Superficial Impetigo



Piodermite Superficial
Impetigo



© Copyrighted

Piodermites
Superficiais

Foliculites



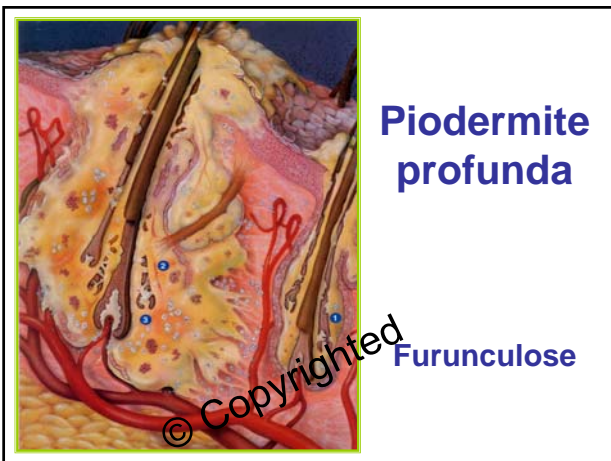
© Copyrighted



© Copyrighted







Piodermite profunda
Furunculose

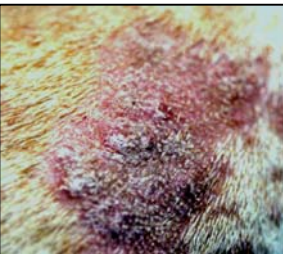


© Copyrighted

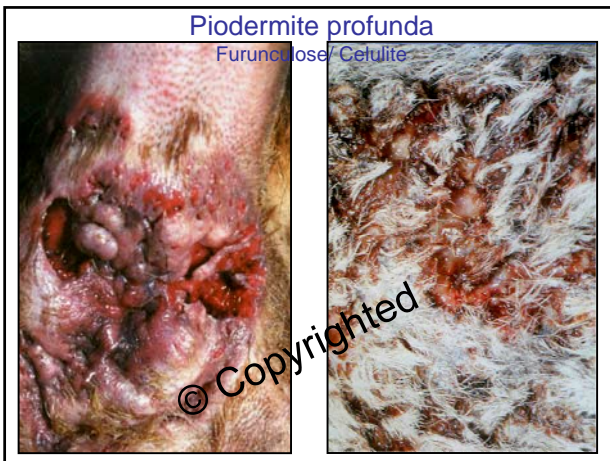


© Copyrighted

Piodermite profunda
Furunculose



© Copyrighted



Dermites Micóticas

Dermatofitose

Apresentação clínica e morfológica

Aspectos Epidemiológicos

Potencial zoonótico

Dermatofitoses

Principais dermatófitos patogênicos isolados de cães e gatos

Dermatófitos	Frequência (%)	
	Cão	Gato
<i>Microsporum canis</i>	82%	98%
<i>Microsporum gypsum</i>	13%	1,5%
<i>Tricophyton mentagrophytis</i>	5%	0,5%

Fonte: LARSSON,C.E.; LUCAS, R.; GERMANO,P.M.L. Dermatofitoses de cães e gatos em São Paulo: estudo da possível influência sazonal. An.bras.Dermat. v. 72, n.2,1997, p.139-142.

Dermatofitoses

Principais dermatófitos zoonóticos





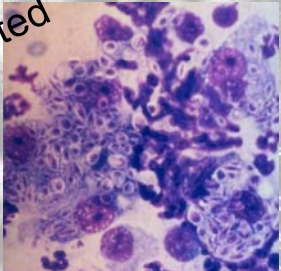
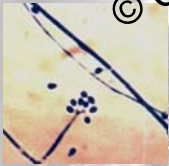






Dermatites Micóticas

Esporotricose
Agente: *Sporothrix schenkii*



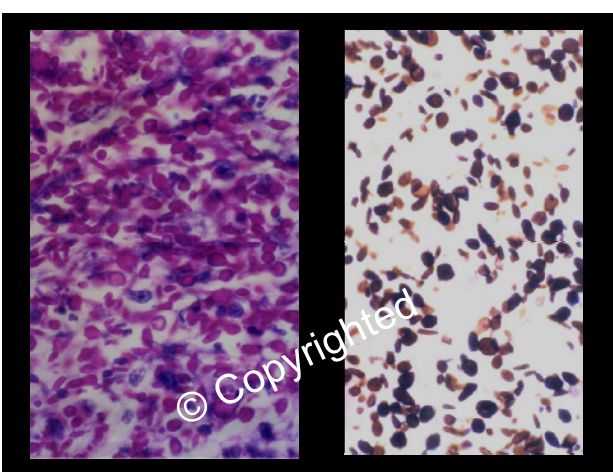
A 'Copyrighted' watermark is visible across the text and images.



Esporotricose Linfocutânea



Fonte: Prof. Silvio A. Marques
UNESP-Botucatu-SP

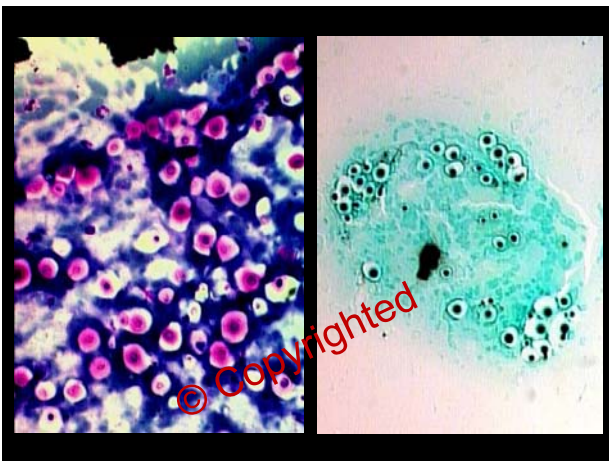


Dermatites Micóticas

Criptococose
Agente: *Cryptococcus neoformans*







Dermatites Micóticas

Ficomicoses

Pitiose *Pythium insidiosum*

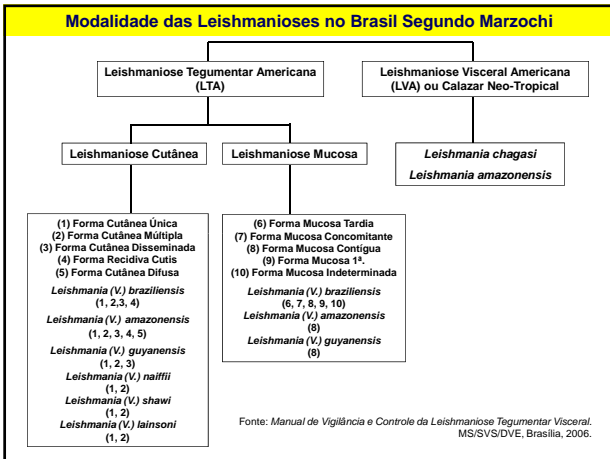
Zigomicose *Conidiobolus coronatus* | equinos e humanos
 Conidiobolus lamprauges |
 Basidiobolus haptosporus → equinos

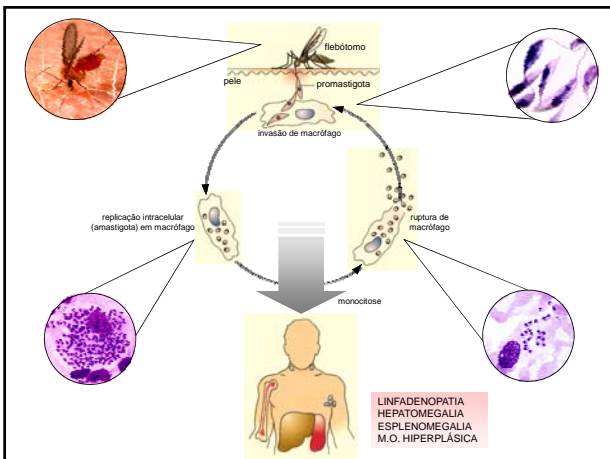


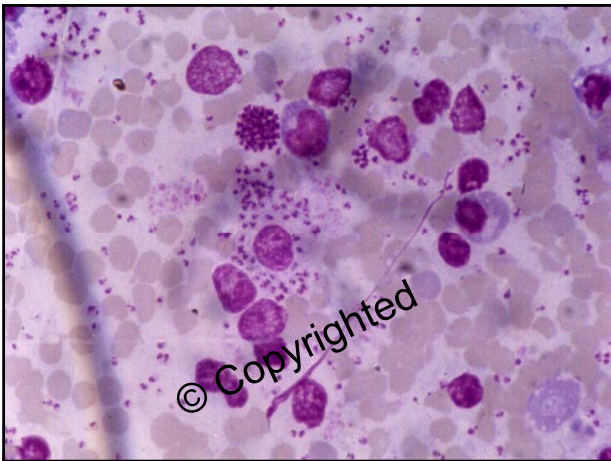


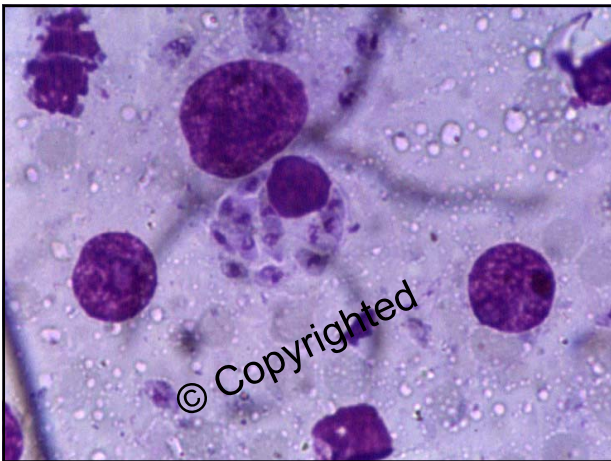
Dermatites Parasitárias

Leishmaniose











Leishmaniose Cutânea



© Copyrighted

Leishmaniose Visceral



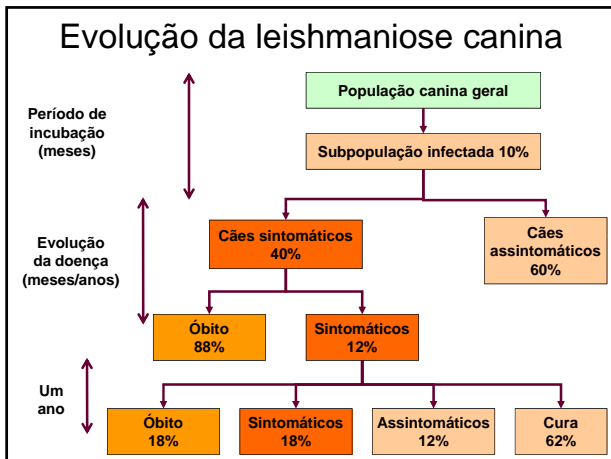
© Copyrighted

31 1:10 AM

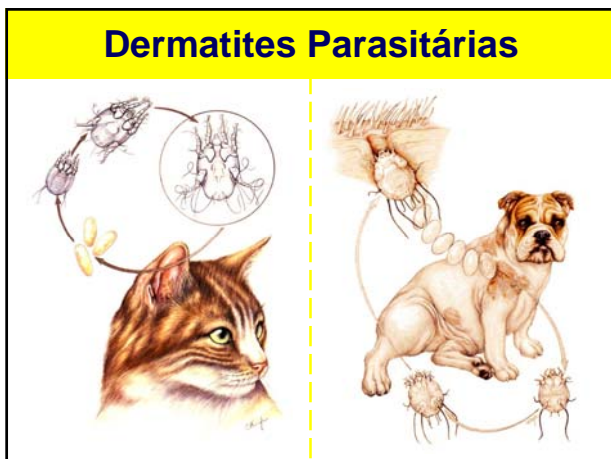


© Copyrighted

31 1:10 AM







Dermatites Parasitárias

Sarna em cães



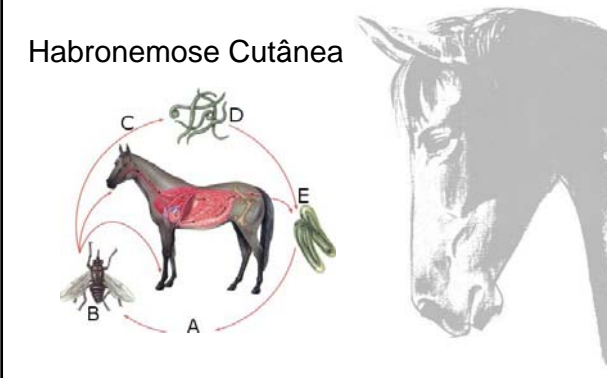
Dermatites Parasitárias

Sarna em gatos

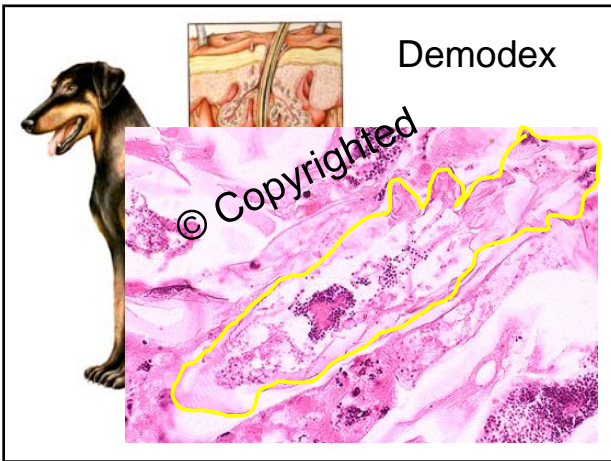


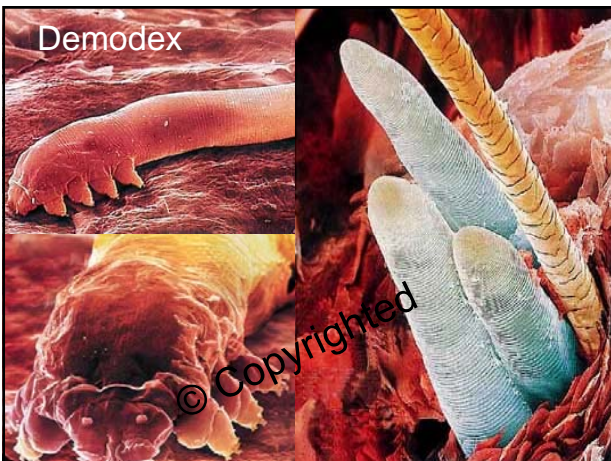
Dermatites Parasitárias

Habronemose Cutânea











Afecções de Anexos

Laminite

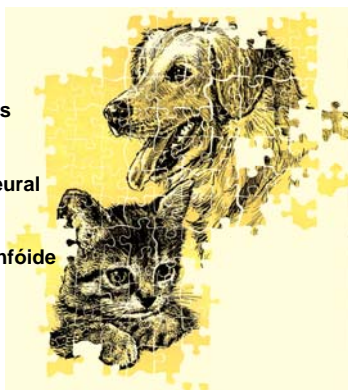
Próxima aula: Neoplasias Cutâneas

Neoplasias Epiteliais

Neoplasias Mesenquimais

Neoplasias de Origem Neural

Neoplasias de Origem Linfóide



Material usado exclusivamente para fins didáticos, permitida a reprodução, desde que citadas as fontes.
