



## Patologia do Sistema Genital Feminino

Prof. Ass. Dr. Raimundo Alberto Tostes

---

---

---

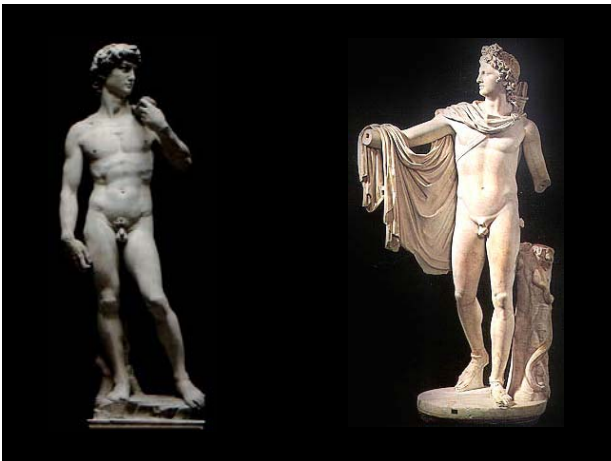
---

---

---

---

---



---

---

---

---

---

---

---

---

## Bolsa Escrotal

↪ Aspectos funcionais

↪ Alterações Inflamatórias

➤ *Dermatite Escrotal*

*Aguda/Crônica*

---

---

---

---

---

---

---

---

## **Bolsa Escrotal**

### ↳ **Neoplasias**

- **Mastocitoma**
- **Carcinoma de Células Escamosas**

---

---

---

---

---

---

---

---



---

---

---

---

---

---

---

---

## **Túnica Vaginal**

- ↳ **Hidrocele**
- ↳ **Quilocelo**
- ↳ **Hematocele**
- ↳ **Inflamação**

---

---

---

---

---

---

---

---



---

---

---

---

---

---

---

---



---

---

---

---

---

---

---

---



---

---

---

---

---

---

---

---

# Testículos

## Anomalias do Desenvolvimento

- Criptorquidismo
- Hermafroditismo
- Pseudohermafroditismo
- Hipoplasia

---

---

---

---

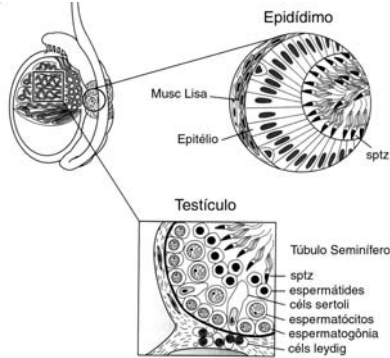
---

---

---

---

## Estrutura Normal do Testículo



---

---

---

---

---

---

---

---

# Testículos

## ↩ Criptorquidismo

- Pode ser uni ou bilateral
- Gene Dominante em Equinos
- ↓ Fertilidade
- Predispõe à neoplasia

---

---

---

---

---

---

---

---

# Testículos

## ↩ Fatores predisponentes à Criptorquidia

- *Hipoplasia testicular*
- *Exposição a estrógenos na prenhez*
- *Parto com feto em apresentação posterior*
- *Retardo no fechamento do umbigo*

---

---

---

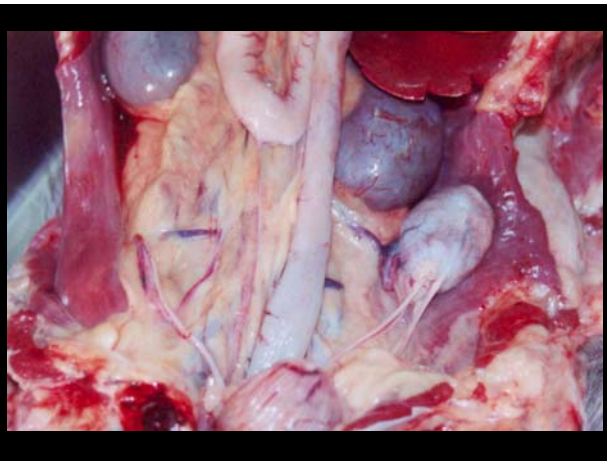
---

---

---

---

---



---

---

---

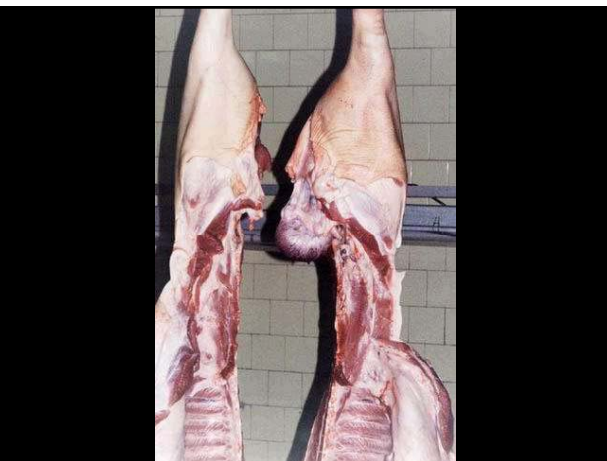
---

---

---

---

---



---

---

---

---

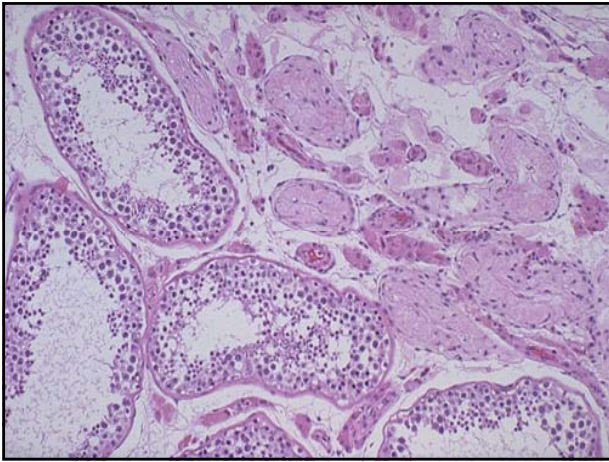
---

---

---

---





---

---

---

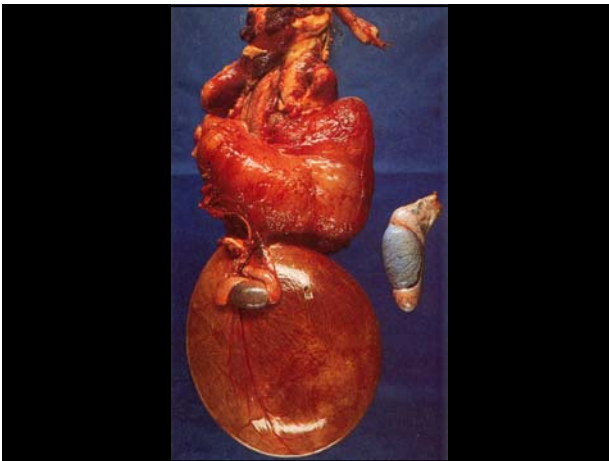
---

---

---

---

---



---

---

---

---

---

---

---

---

**Testículos**

↳ *Anomalia do Sexo Gonadal*

**Hermafroditismo**

- **Biglandular Unilateral**  
*Ovario-Testis + Test ou Ovário*
- **Biglandular Bilateral**  
*Ovario-Testis Bilateral*
- **Alternante**  
*Testículo + Ovário*

---

---

---

---

---

---

---

---

### ↵ Características do Hermafroditismo

- *Pênis semelhante a clítoris*
- *Próstata e ves. seminal hipoplásicas*
- *Útero e gl. mamária hipoplásicas*
- *Ovário hipoplásico*

---

---

---

---

---

---

---

---

### ↵ Características do Pseudohermafroditismo

- *Gônada definida (Testículos)*
- *Caracteres secundários do sexo oposto*

---

---

---

---

---

---

---

---



---

---

---

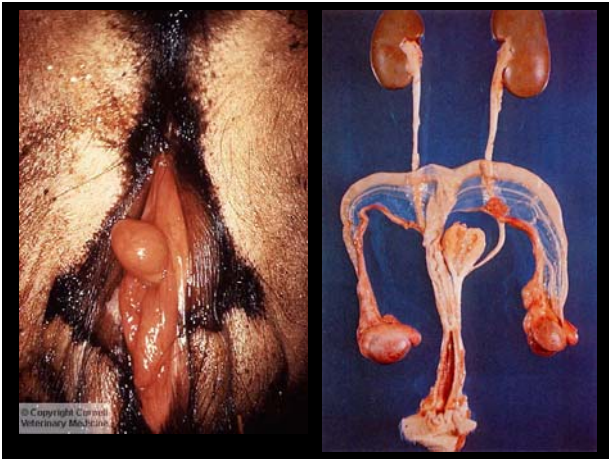
---

---

---

---

---



---

---

---

---

---

---

---

---

# Testículos

↪ **Hipoplasia Testicular**

- **Pode ser uni ou bilateral**
- **Grave, Intermediária, Moderada**

⇒ O mais importante diagnóstico diferencial é com a *Degeneração*.

---

---

---

---

---

---

---

---



---

---

---

---

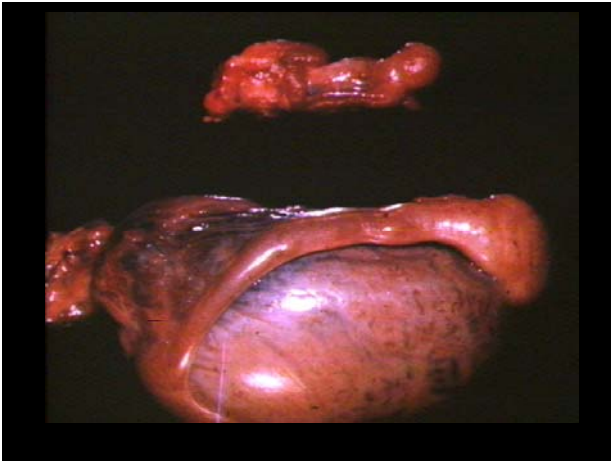
---

---

---

---





---

---

---

---

---

---

---

---

**Testículos**  
**Degeneração Testicular**

↳ **Etiologia**

- *Térmica*
- *Nutricional*
- *Infecções localizadas*
- *Sistêmicas*
- *Lesões Vasculares*
- *Outras*

---

---

---

---

---

---

---

---

**Testículos**

↳ **Morfologia**

- *Testículos macios e atróficos*
- *Focos de calcificação eventuais*
- **Micro:**
  - *Túbulos atróficos*
  - *Fibrose intersticial*
  - *Vacuolização do epitélio de revestimento*

---

---

---

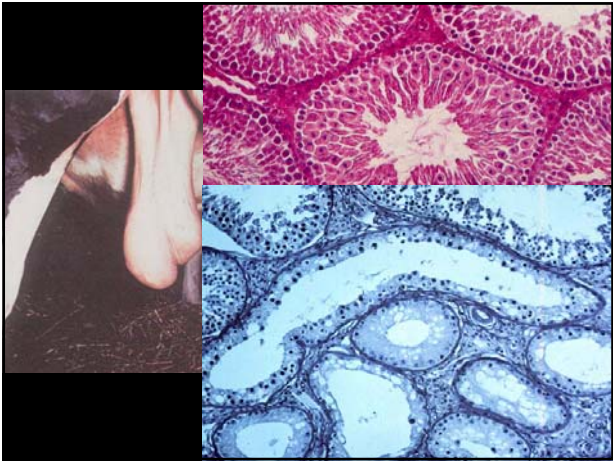
---

---

---

---

---



---

---

---

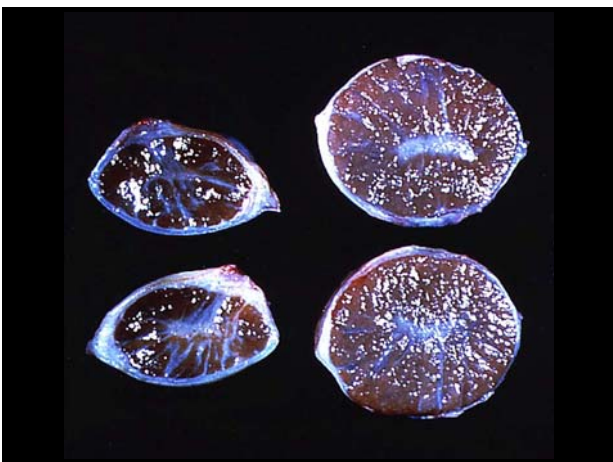
---

---

---

---

---



---

---

---

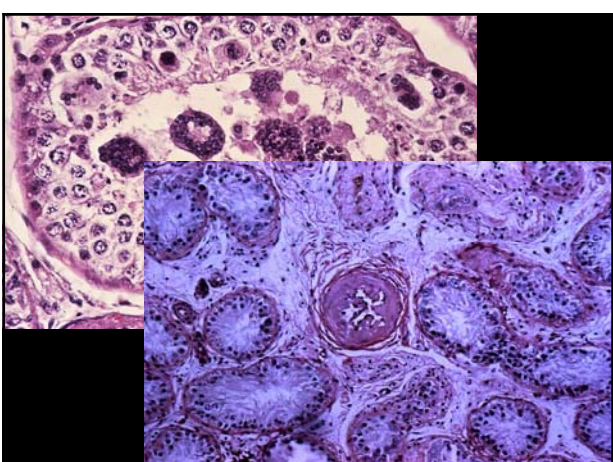
---

---

---

---

---



---

---

---

---

---

---

---

---

# Testículos

## ↪ Inflamação (Orquite)

- **Geralmente bacteriana**
  - ⇒ Hematogênica
  - ⇒ Progressão Retrógrada
- **Formas Infeciosas de Orquite**

---

---

---

---

---

---

---

---

## Causas Comuns de Orquites Infeciosas em An. Domésticos

### Touro

*Brucella abortus*  
*Chlamydia psittaci*  
*Actinomyces pyogenes*  
*Mycobacterium tuberculosis*  
*Nocardia asteroides*  
Orbivirus (Língua Azul)

### Bode

*Brucella melitensis*

### Carneiro

*Brucella ovis*  
*Corynebacterium ovis*

### Cão

*Brucella canis*  
*Escherichia coli*  
*Proteus vulgaris*  
Morbillivirus 1

### Cachaço

*Brucella suis*

### Garanhão

*Salmonella abortus equi*  
Vírus da A.I.E.

---

---

---

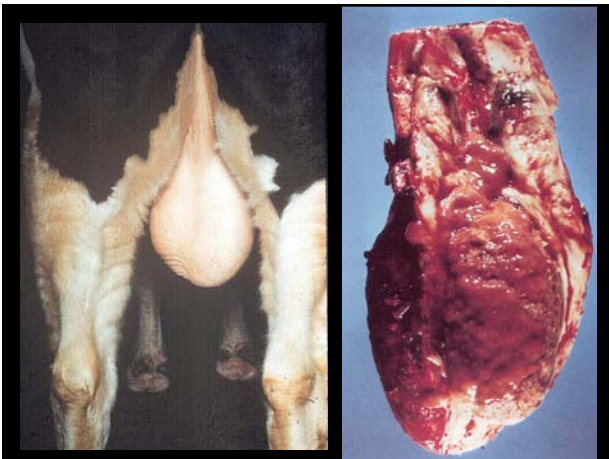
---

---

---

---

---



---

---

---

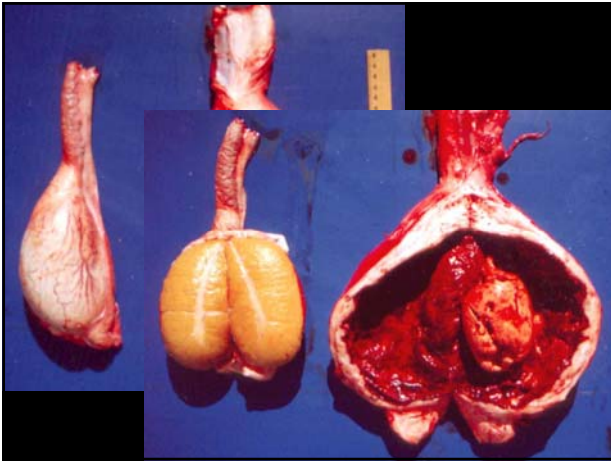
---

---

---

---

---




---

---

---

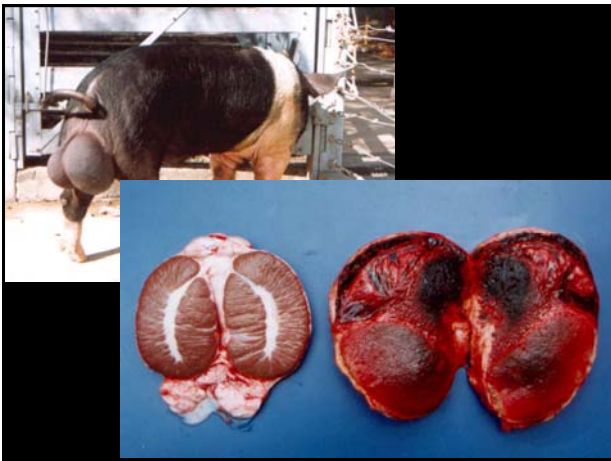
---

---

---

---

---




---

---

---

---

---

---

---

---

## Testículos

↪ **Neoplasias**

- **Tumor de Cél. de Leydig (Leydigoma)**
  - Cél. Intersticiais de Leydig
  - **Benignos, Circunscritos, Nodulares**
  - **Coloração Amarelada**
  - **Eventualmente funcionais**
    - (↑ Testosterona)
  - **Mais comum em cães e touros**

---

---

---

---

---

---

---

---





---

---

---

---

---

---

---

---

# Testículos

↪ **Neoplasias**

- **Seminoma**  
Céls. Germinativas
  - Firmes, Esbranquiçados ou Cinza
  - Invasivo localmente
  - Geralmente Afuncionais
  - Prevalentes em criptórcios
  - Mais comum em equinos e cães

---

---

---

---

---

---

---

---



---

---

---

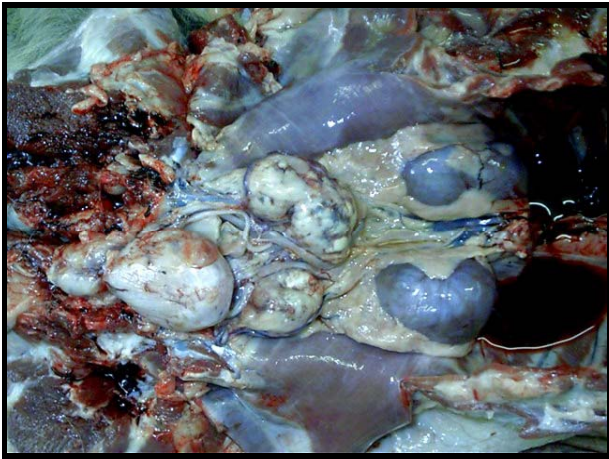
---

---

---

---

---




---

---

---

---

---

---

---

---




---

---

---

---

---

---

---

---

## Testículos

↪ **Neoplasias**

- **Tumor de Cél. de Sertoli (Sertolioma)**
  - Cél. Sustentação dos túbulos seminíferos
  - **Firme, branca e lobulada**
  - **Funcionais (↑Estrógenos)**
    - ⇒ Feminização
    - ⇒ Mielotoxicidade
  - **↑ prevalente em criptórquios**
  - **Invasivos e metastáticos**
  - **3º mais comum em cães**

↪ **Outras Neoplasias: Teratomas**

---

---

---

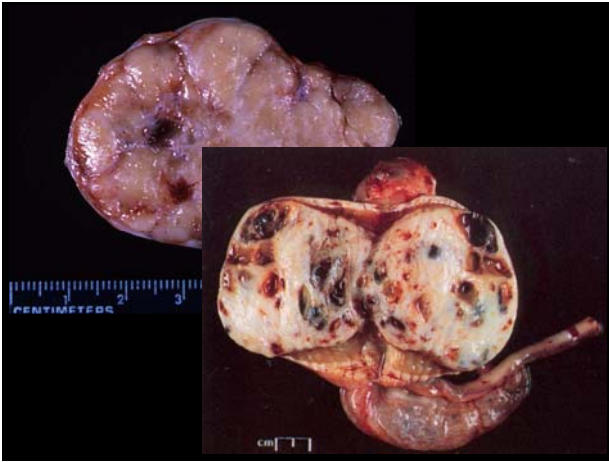
---

---

---

---

---



---

---

---

---

---

---

---

---

## **Cordão Espermático**

- ↻ Varicocele do plexo pampiniforme
- ↻ Torção do cordão espermático
- ↻ Funiculite
- ↻ Botriomicose (*Staphylococcus aureus*)

---

---

---

---

---

---

---

---

## **Cordão Espermático**

- ↻ Varicocele do plexo pampiniforme
- ↻ Torção do cordão espermático
- ↻ **Funiculite**
- ↻ Botriomicose (*Staphylococcus aureus*)

---

---

---

---

---

---

---

---

## Epidídimo

↳ Espermatocoele

↳ Inflamação - Epididimite

↳ Não-Infecçiosa

↳ Infecçiosa

Infecção retrógrada

Acompanha as orquites

---

---

---

---

---

---

---

---



---

---

---

---

---

---

---

---

## Vesícula Seminal

↳ Inflamação

Espermatocistite ou Vesiculite Seminal

↳ Brucelose

↳ Tuberculose

↳ Tricomonose

↳ Outros *Corynebacterium pyogenes*  
*Escherichia coli*  
*Streptococcus*  
*Staphylococcus*

---

---

---

---

---

---

---

---



# Próstata

⇒ **Hipertrofia**

⇒ **Hiperplasia Prostática Benigna (HPB)**

⇒ **Comuns em cães idosos**

⇒ **Relação hormonal/Mecanismos obscuros**

⇒ **Consequências:**

**Obstrução e infecção do T.U.**

**Hidronefrose**

**Constipação**

---

---

---

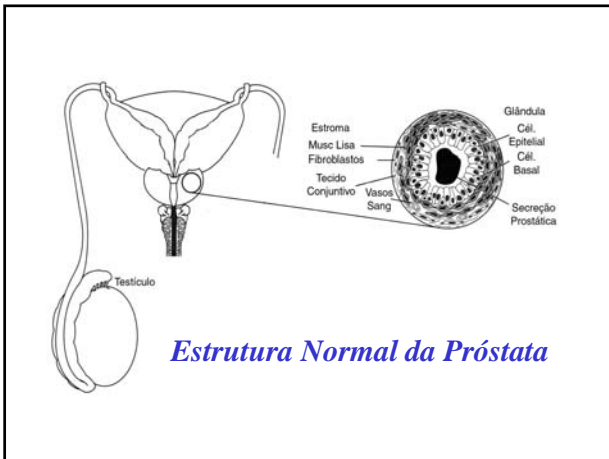
---

---

---

---

---



---

---

---

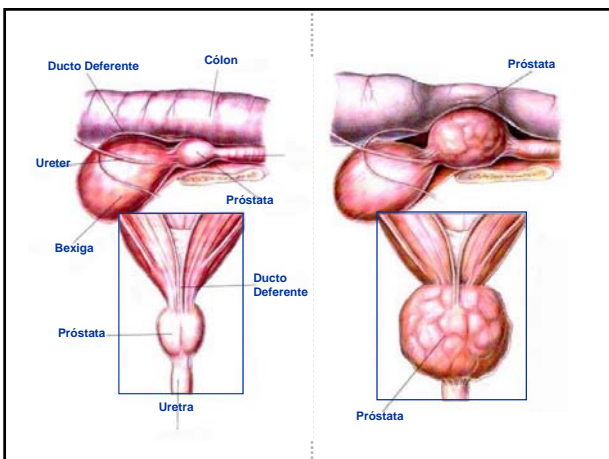
---

---

---

---

---



---

---

---

---

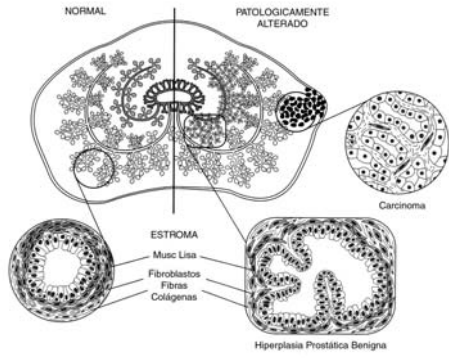
---

---

---

---

### Características das Alterações Prostáticas




---

---

---

---

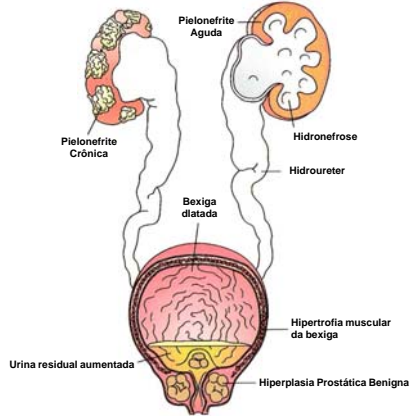
---

---

---

---

### Complicações da Hiperplasia Prostática




---

---

---

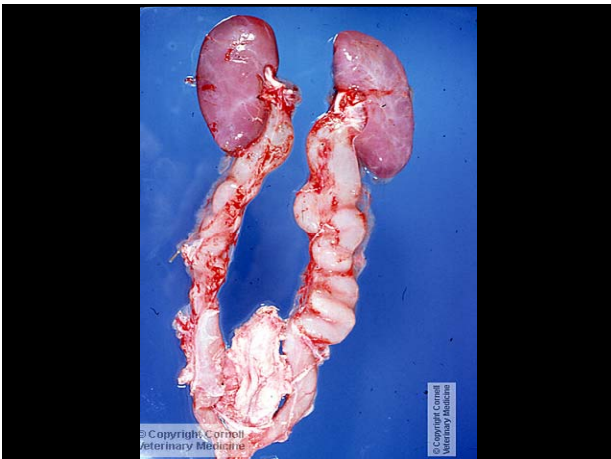
---

---

---

---

---




---

---

---

---

---

---

---

---



---

---

---

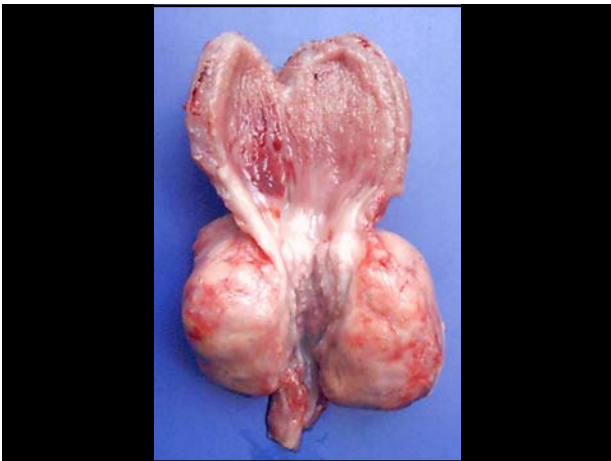
---

---

---

---

---



---

---

---

---

---

---

---

---

**Próstata**

- ↪ **Cistos Paraprostáticos**
- ↪ **Neoplasias**
  - Adenoma**
  - Adenocarcinoma**

---

---

---

---

---

---

---

---




---

---

---

---

---

---

---

---

## Próstata

- ↪ **Prostatite**
  - ↪ Comum em cães
  - ↪ **Origem**
    - ↪ Ascendente/Descendente
    - ↪ Hematogênica/Contiguidade
  - ↪ **Apresentação**
    - ↪ Aguda ou Crônica
  - ↪ **Etiologia**
    - ↪ Específica – *Brucella canis*
    - ↪ Inespecífica – *E. coli*, *Proteus vulgaris*, *Streptococcus*, *Staphylococcus*

---

---

---

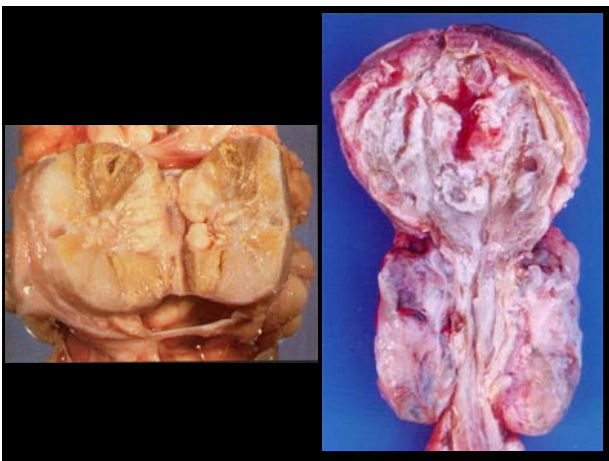
---

---

---

---

---




---

---

---

---

---

---

---

---



# Pênis e Prepúcio

## ↪ Anomalias do Desenvolvimento

- ↪ Hipoplasia
- ↪ Hipospadia e Epispadia
- ↪ Persistência do frênulo
- ↪ Fimose e Parafimose

---

---

---

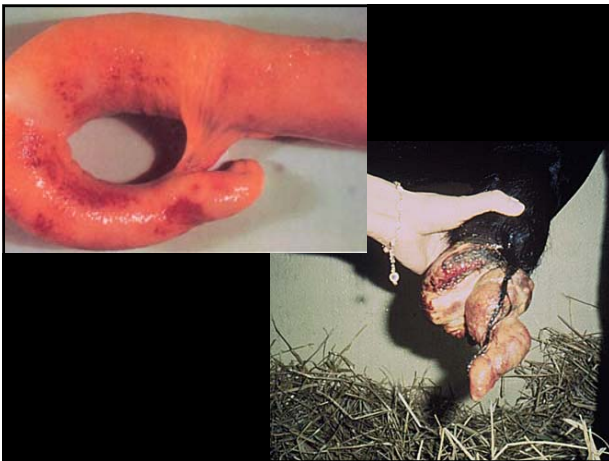
---

---

---

---

---



---

---

---

---

---

---

---

---

# Pênis e Prepúcio

## ↪ Inflamação

- ↪ Glande peniana – Balanite
- ↪ Prepúcio – Postite
  - Traumática
  - Postite Ulcerativa dos Ovinos
    - ↪ *Corynebacterium renale*
  - Herpesvírus
  - Habronemose

---

---

---

---

---

---

---

---




---



---



---



---



---



---



---

## Pênis e Prepúcio

↪ **Neoplasias**

- ⇒ **Tumor Venéreo Transmissível**
  - Etiologia
  - Histogênese
  - Características Epidemiológicas
  - Características Macro/Micro
- ⇒ **Carcinoma de Cél. Escamosas**
- ⇒ **Fibropapiloma**

---



---



---



---



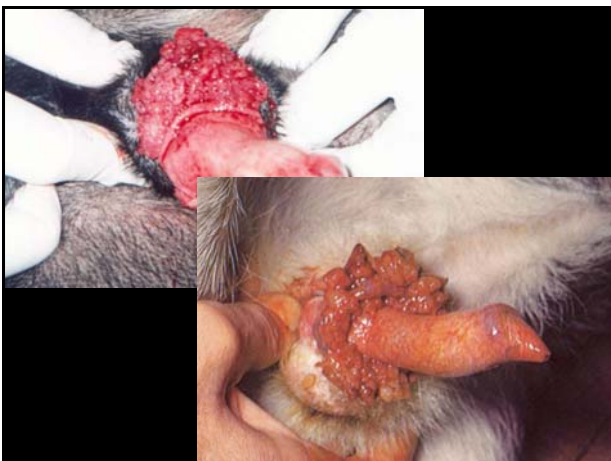
---



---



---




---



---



---



---



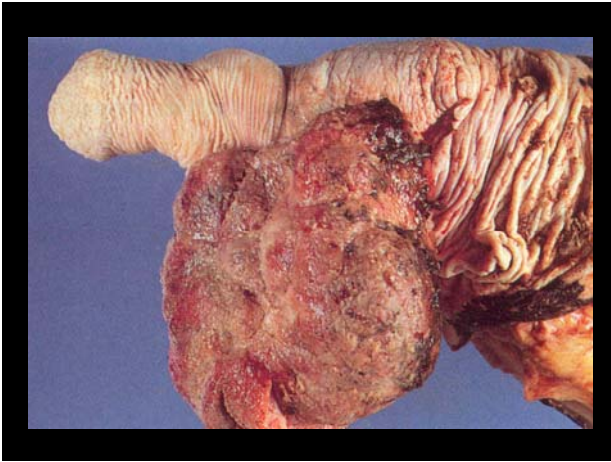
---



---



---



---

---

---

---

---

---

---

---

Material usado exclusivamente para fins didáticos, permitida a reprodução, desde que citadas as fontes.

---

---

---

---

---

---

---

---